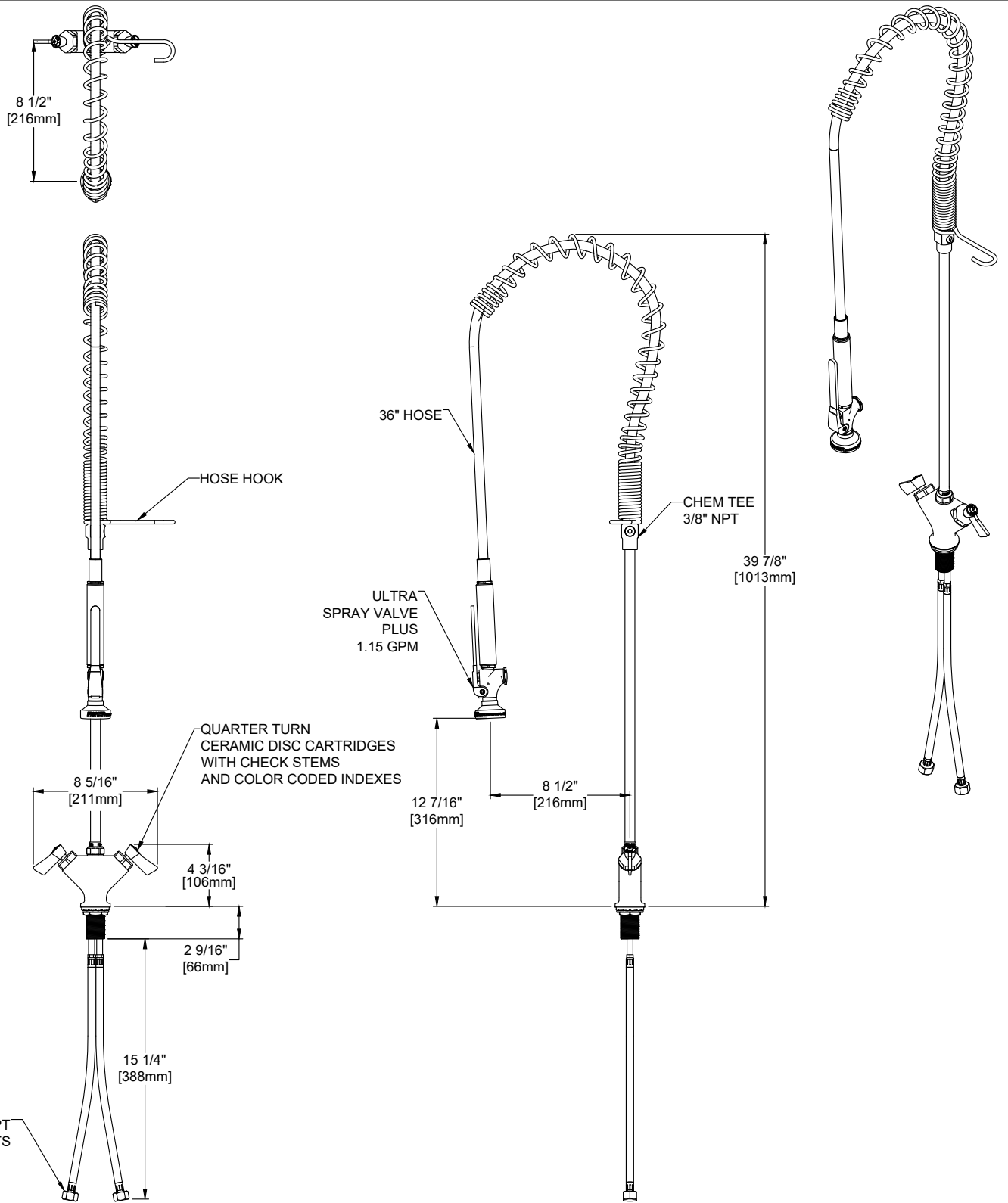


Customer/Wholesaler:	Date:	Job Name:	Model Specified: 21100	Quantity:
Contractor:		Architect/Engineer:		



PRODUCT SPECIFICATIONS:
 PRE-RINSE UNIT: SINGLE DECK DUAL CONTROL MOUNT MIXING FAUCET, QUARTER TURN CERAMIC DISC CARTRIDGES W/CHECK STEMS, LEVER HANDLES, 36" FLEXIBLE STAINLESS STEEL HOSE, 1.15 GPM SPRAY VALVE, 12" WALL BRACKET, 1/2" NPT FEMALE INLETS

Drawn: LC	Checked: EM	Approved: LC	Date: 02/19/24
-----------	-------------	--------------	----------------

PRODUCT COMPLIANCE:
 ASME A112.18.1 / CSA B125.1
 NSF 61 - Section 9
 NSF 372 (Low Lead Content)
 2019 DOE PRSV - Class II

Sheet: 1 of 2



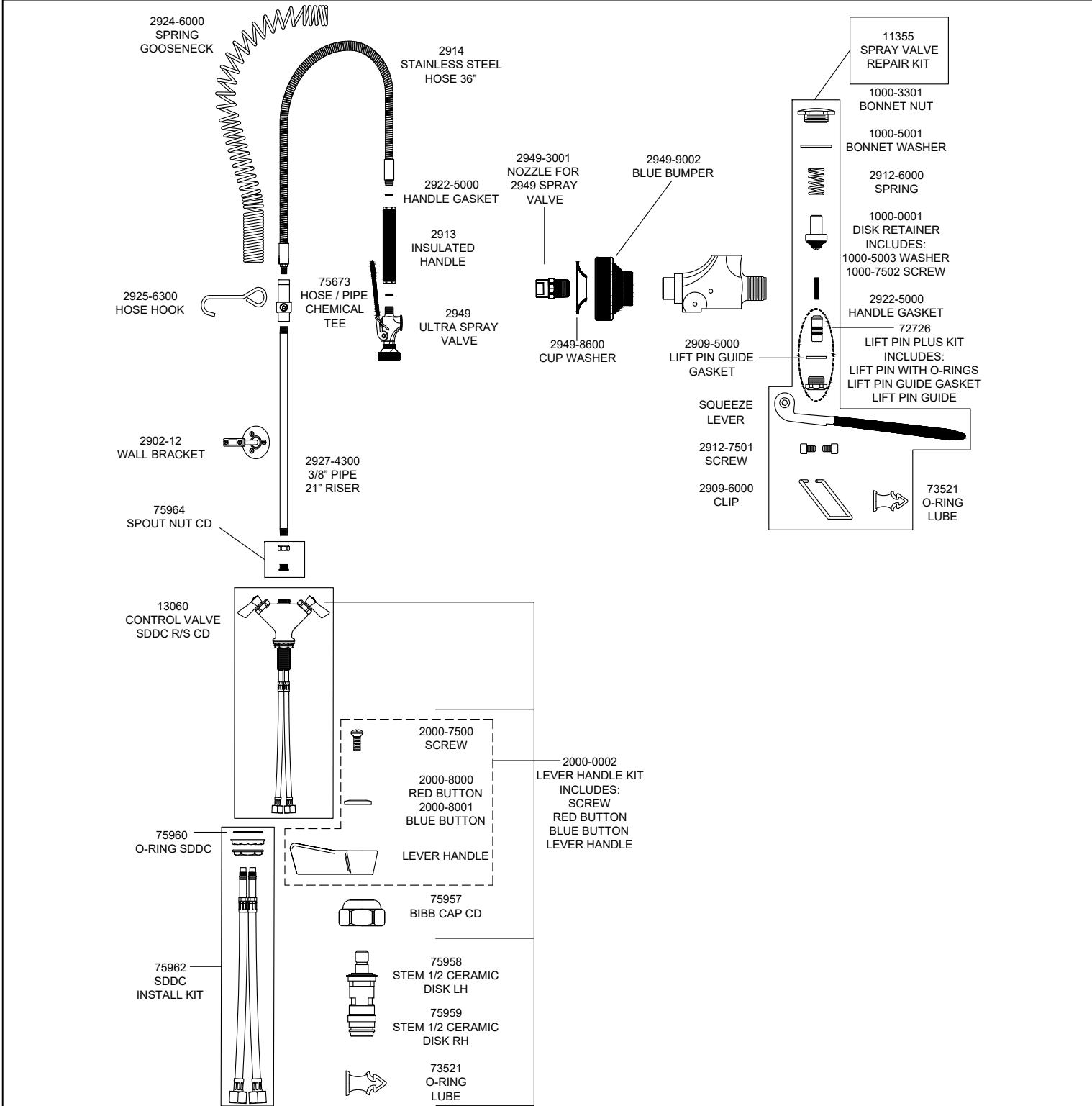
FISHER MANUFACTURING COMPANY TOLL FREE: 800-421-6162 - FAX: 800-832-8238
customer@fisherfaucets.com - www.fisherfaucets.com

PRODUCT NAME:

PRERINSE SPG SDDCDLH

SPEC. PRCB-SP-SDDL

Customer/Wholesaler:	Date:	Job Name:	Model Specified: 21100	Quantity:
Contractor:		Architect/Engineer:		



Replacement Parts for Pre-Rinse Units

PRODUCT SPECIFICATIONS:
 PRE-RINSE UNIT: SINGLE DECK DUAL CONTROL MOUNT MIXING FAUCET, QUARTER TURN CERAMIC DISK CARTRIDGES W/CHECK STEMS, LEVER HANDLES, 36" FLEXIBLE STAINLESS STEEL HOSE, 1.15 GPM SPRAY VALVE, 12" WALL BRACKET, 1/2" NPT FEMALE INLETS

PRODUCT COMPLIANCE:
 ASME A112.18.1 / CSA B125.1
 NSF 61 - Section 9
 NSF 372 (Low Lead Content)
 2019 DOE PRSV - Class II

Drawn: LC	Checked: EM	Approved: LC	Date: 02/19/24	Sheet: 2 of 2
-----------	-------------	--------------	----------------	---------------