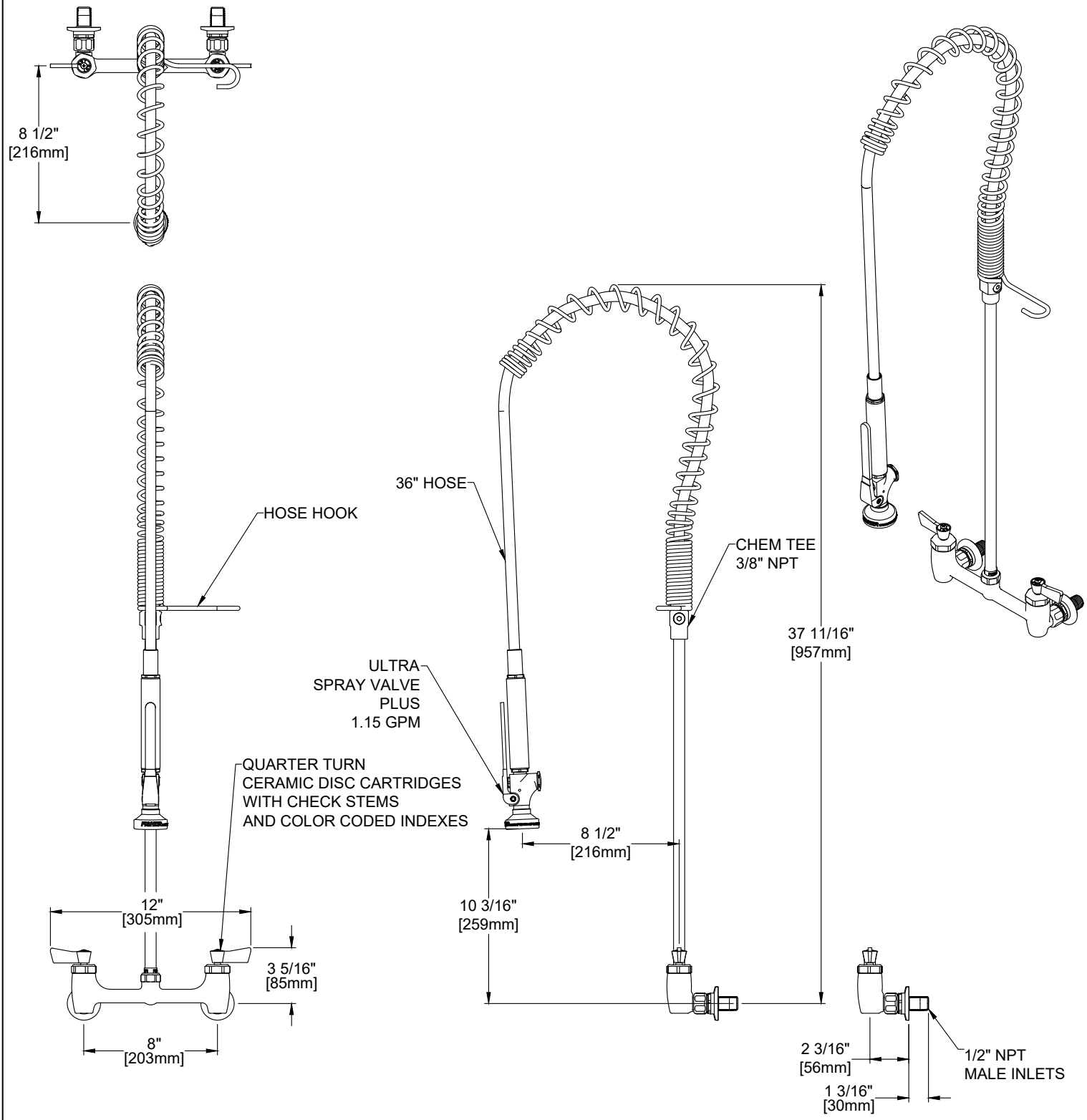
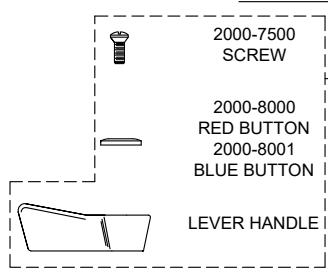
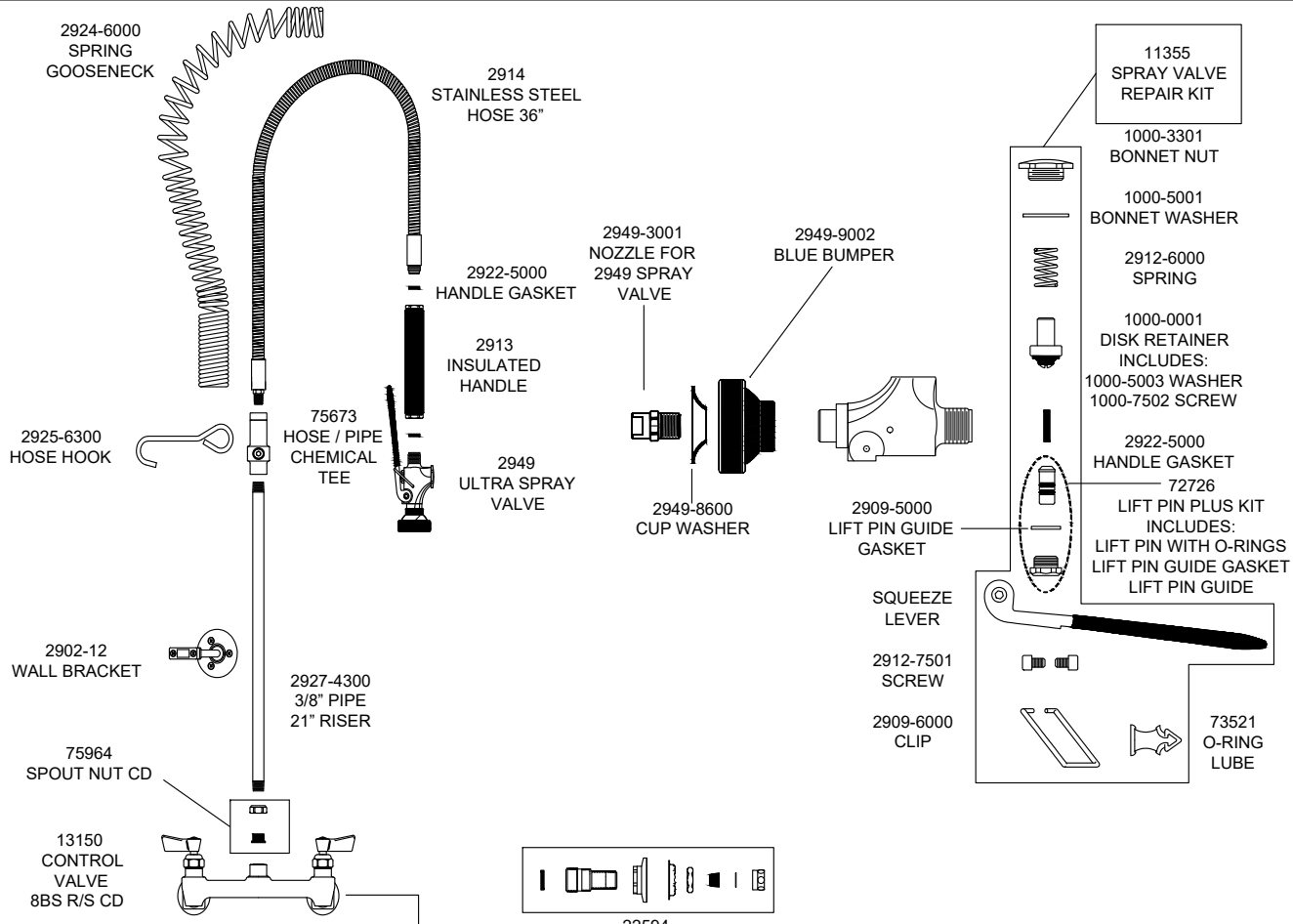


Customer/Wholesaler:	Date:	Job Name:	Model Specified: 13330	Quantity:
Contractor:		Architect/Engineer:		

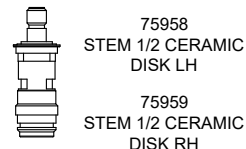
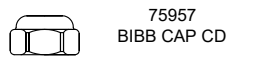


<b>PRODUCT SPECIFICATIONS:</b> PRE-RINSE UNIT: 8" BACKSPLASH MOUNT MIXING FAUCET, QUARTER TURN CERAMIC DISC CARTRIDGES W/CHECK STEMS, LEVER HANDLES, 36" FLEXIBLE STAINLESS STEEL HOSE, 1.15 GPM SPRAY VALVE, 12" WALL BRACKET, 1/2" NPT MALE INLETS		<b>PRODUCT COMPLIANCE:</b> ASME A112.18.1 / CSA B125.1 NSF 61 - Section 9 NSF 372 (Low Lead Content) 2019 DOE PRSV - Class II	
Drawn: LC	Checked: EM	Approved: LC	Date: 02/21/24
Sheet:			1 of 2

Customer/Wholesaler:	Date:	Job Name:	Model Specified: 13330	Quantity:
Contractor:		Architect/Engineer:		



2000-0002 LEVER HANDLE KIT INCLUDES: SCREW RED BUTTON BLUE BUTTON LEVER HANDLE



## Replacement Parts for Pre-Rinse Units

<b>PRODUCT SPECIFICATIONS:</b> PRE-RINSE UNIT: 8" BACKSPASH MOUNT MIXING FAUCET, QUARTER TURN CERAMIC DISC CARTRIDGES W/CHECK STEMS, LEVER HANDLES, 36" FLEXIBLE STAINLESS STEEL HOSE, 1.15 GPM SPRAY VALVE, 12" WALL BRACKET, 1/2" NPT MALE INLETS		<b>PRODUCT COMPLIANCE:</b> ASME A112.18.1 / CSA B125.1 NSF 61 - Section 9 NSF 372 (Low Lead Content) 2019 DOE PRSV - Class II	
Drawn: LC	Checked: EM	Approved: LC	Date: 02/21/24
Sheet:			2 of 2