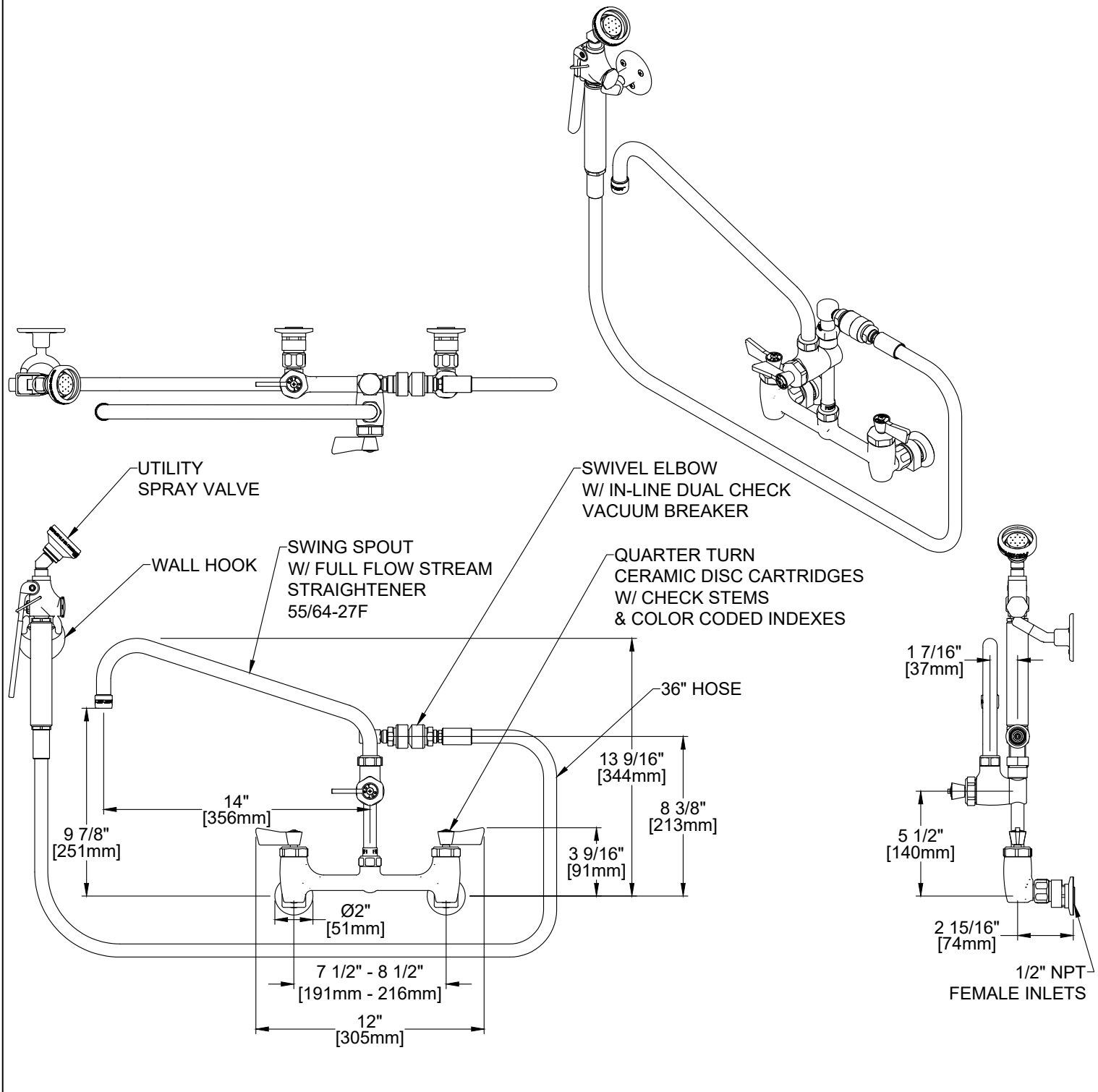


Customer/Wholesaler:	Date:	Job Name:	Model Specified: 11770	Quantity:
Contractor:		Architect/Engineer:		

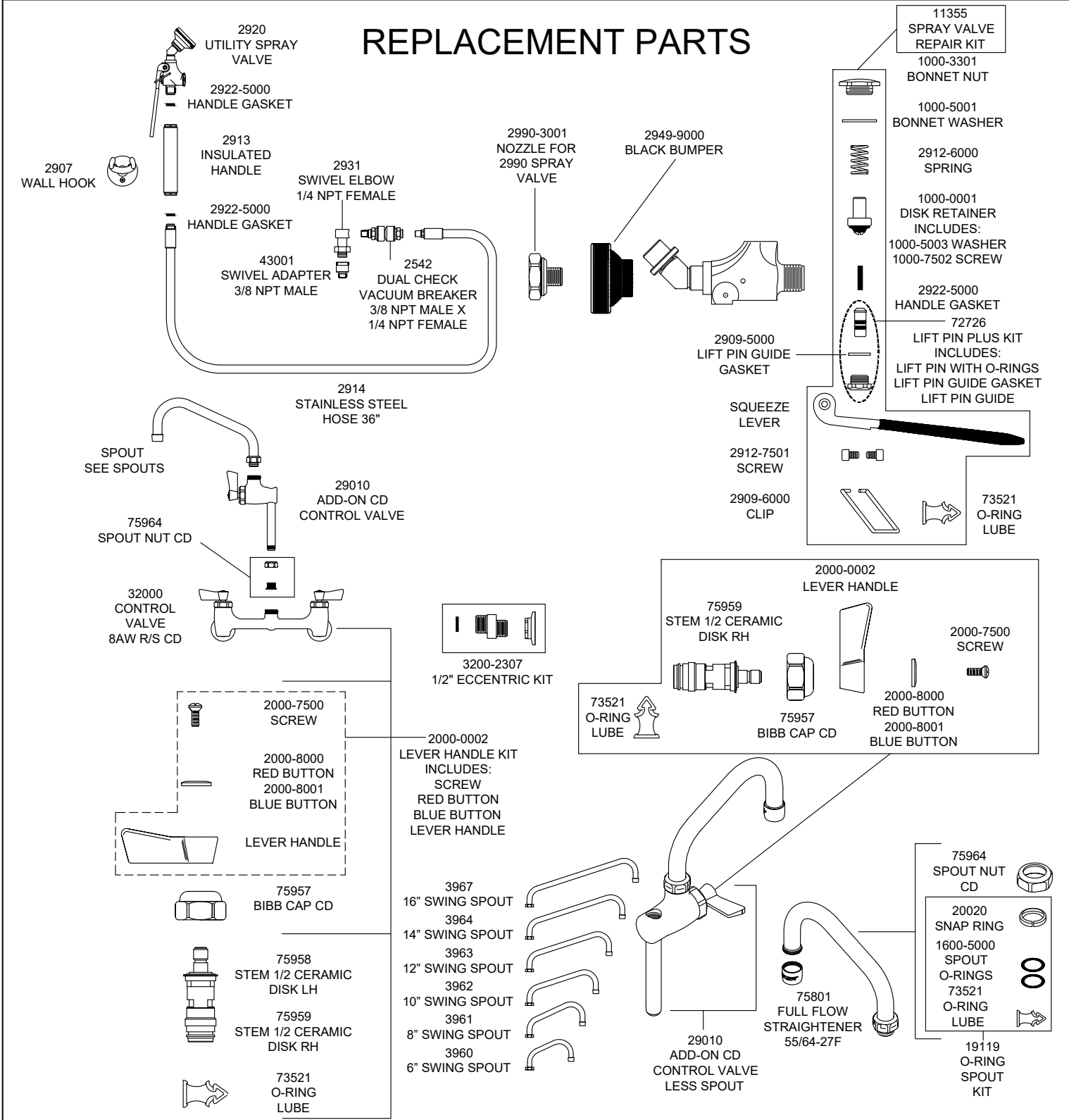


PRODUCT SPECIFICATIONS: 8" ADJUSTABLE WALL MOUNT FAUCET, QUARTER TURN CERAMIC DISC CARTRIDGES W/ CHECK STEMS, LEVER HANDLES, ADD-ON FAUCET, SWING SPOUT W/ FULL FLOW STREAM STRAIGHTENER, 36" FLEXIBLE STAINLESS STEEL HOSE, 2.65 GPM @ 80 PSI UTILITY SPRAY VALVE, SWIVEL ELBOW W/ IN-LINE DUAL CHECK VACUUM BREAKER, WALL HOOK, 1/2" NPT FEMALE INLETS

PRODUCT COMPLIANCE:  
 ASME A112.18.1 / CSA B125.1  
 NSF 61 - Section 9  
 NSF 372 (Low Lead Content)

Customer/Wholesaler:	Date:	Job Name:	Model Specified: 11770	Quantity:
Contractor:		Architect/Engineer:		

## REPLACEMENT PARTS



**PRODUCT SPECIFICATIONS:** 8" ADJUSTABLE WALL MOUNT FAUCET, QUARTER TURN CERAMIC DISC CARTRIDGES W/ CHECK STEMS, LEVER HANDLES, ADD-ON FAUCET, SWING SPOUT W/ FULL FLOW STREAM STRAIGHTENER, 36" FLEXIBLE STAINLESS STEEL HOSE, 2.65 GPM @ 80 PSI UTILITY SPRAY VALVE, SWIVEL ELBOW W/ IN-LINE DUAL CHECK VACUUM BREAKER, WALL HOOK, 1/2" NPT FEMALE INLETS

**PRODUCT COMPLIANCE:** ASME A112.18.1 / CSA B125.1 NSF 61 - Section 9 NSF 372 (Low Lead Content)