

FISHER[®]

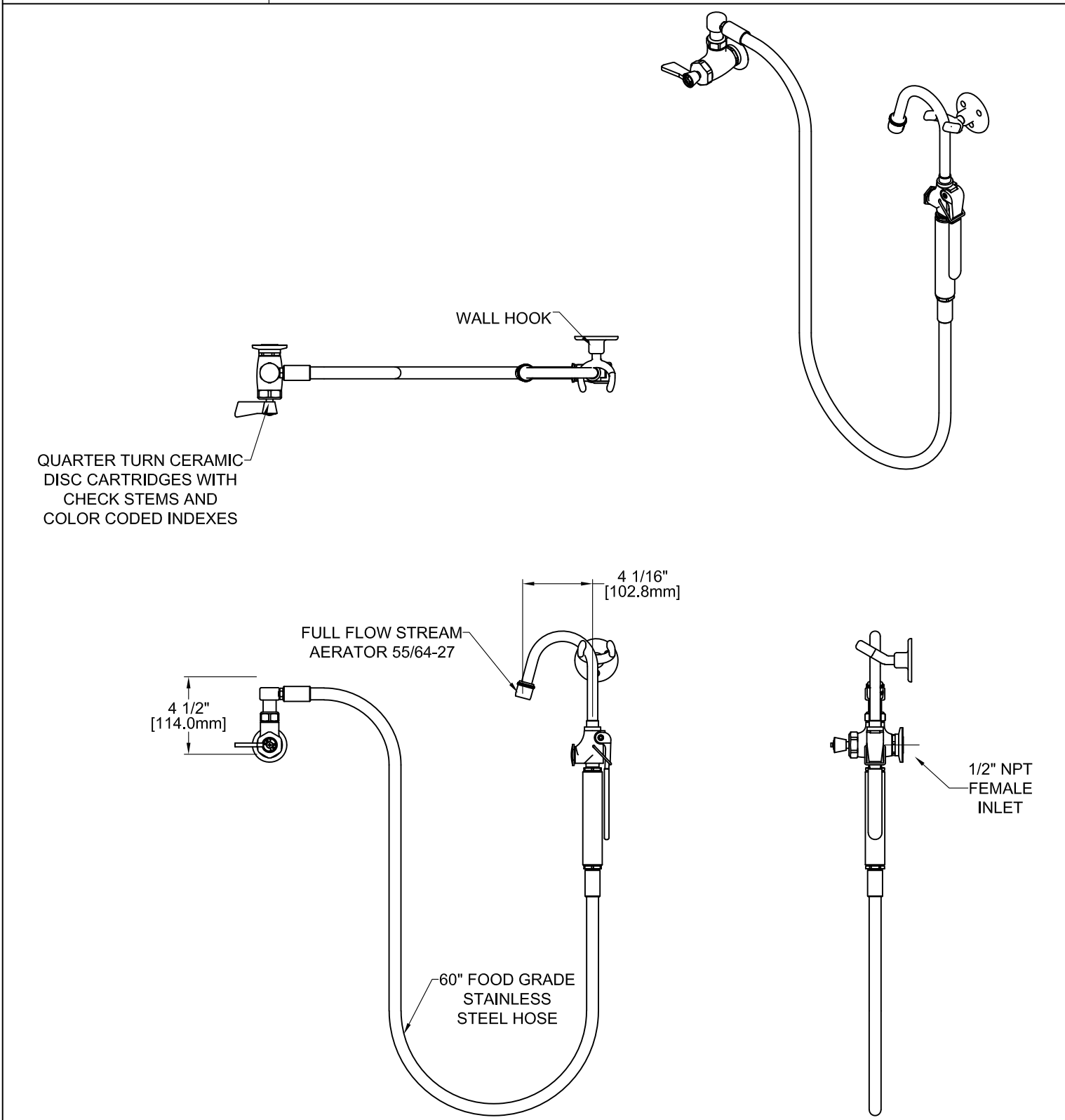
FISHER MANUFACTURING COMPANY TOLL FREE: 800-421-6162 - FAX: 800-832-8238
customer@fisherfaucets.com - www.fisherfaucets.com

PRODUCT NAME:

POT FILLER SVE SWCDLH

SPEC.HPCB-SVE-SWL

Customer/Wholesaler:	Date:	Job Name:	Model Specified:27500	Quantity:
Contractor:	Architect/Engineer:			



PRODUCT SPECIFICATIONS:
SINGLE WALL MOUNT MIXING FAUCET, QUARTER-TURN CERAMIC DISC CARTRIDGE W/
SPRING CHECK, LEVER HANDLES, 60" FLEXIBLE STAINLESS STEEL HOSE, POT FILLER WITH
FULL FLOW STREAM AERATOR 55/64-27, W/ HOOK & 1/2" NPT FEMALE INLETS

PRODUCT COMPLIANCE:
ASME A112.18.1 / CSA B125.1
NSF 61 - Section 9
NSF 372 (Low Lead Content)

FISHER[®]

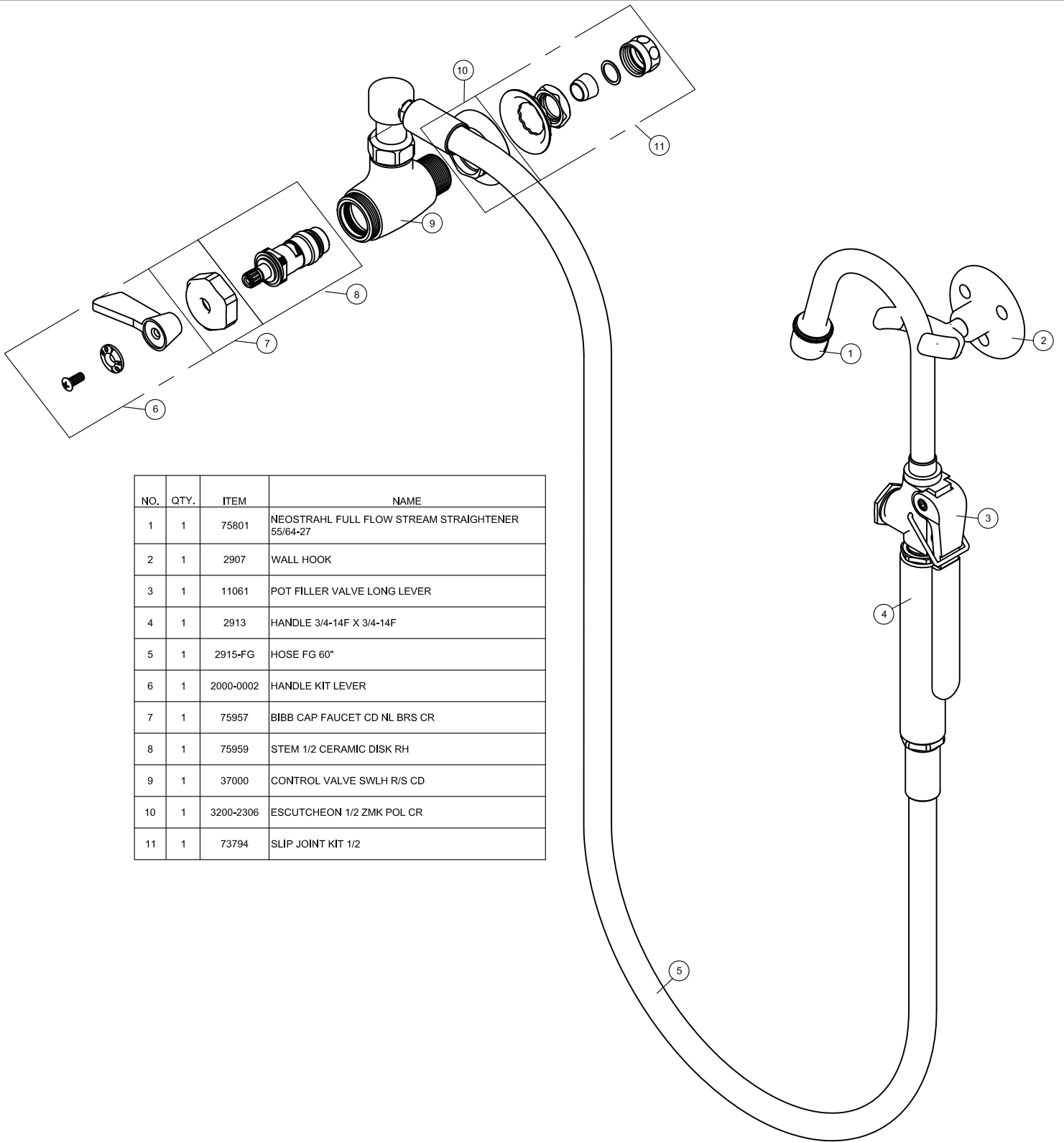
FISHER MANUFACTURING COMPANY TOLL FREE: 800-421-6162 - FAX: 800-832-8238
customer@fisherfaucets.com - www.fisherfaucets.com

PRODUCT NAME:

POT FILLER SVE SWCDLH

SPEC.HPCB-SVE-SWL

Customer/Wholesaler:	Date:	Job Name:	Model Specified: 27500	Quantity:
Contractor:		Architect/Engineer:		



NO.	QTY.	ITEM	NAME
1	1	75801	NEOSTRAHL FULL FLOW STREAM STRAIGHTENER 55/64-27
2	1	2907	WALL HOOK
3	1	11061	POT FILLER VALVE LONG LEVER
4	1	2913	HANDLE 3/4-14F X 3/4-14F
5	1	2915-FG	HOSE FG 60"
6	1	2000-0002	HANDLE KIT LEVER
7	1	75957	BIBB CAP FAUCET CD NL BRS CR
8	1	75959	STEM 1/2 CERAMIC DISK RH
9	1	37000	CONTROL VALVE SWLH R/S CD
10	1	3200-2306	ESCUTCHEON 1/2 ZMK POL CR
11	1	73794	SLIP JOINT KIT 1/2

PRODUCT SPECIFICATIONS:

SINGLE WALL MOUNT MIXING FAUCET, QUARTER-TURN CERAMIC DISC CARTRIDGE W/ SPRING CHECK, LEVER HANDLES, 60" FLEXIBLE STAINLESS STEEL HOSE, POT FILLER WITH FULL FLOW STREAM AERATOR 55/64-27, W/ HOOK & 1/2" NPT FEMALE INLET

PRODUCT COMPLIANCE:

ASME A112.18.1 / CSA B125.1
NSF 61 - Section 9
NSF 372 (Low Lead Content)