

APPLICATION:

PRODUCT NAME: **DRAINING FLAT STRAINER
BRS OVF 19 X 21 KNOB**

JOB NAME:

MODEL:

QUANTITY:

ITEM NO.:

☐ 23558 W/ FLAT STRAINER & KNOB
& 19" X 21" OVERFLOW

OPTIONS OR MODIFICATIONS:

☐ OTHER _____

FEATURES:

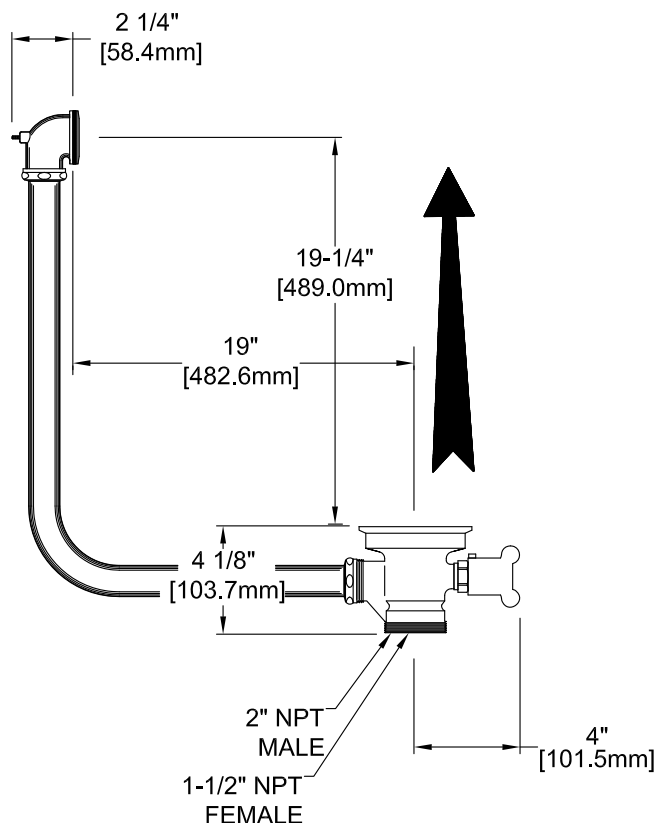
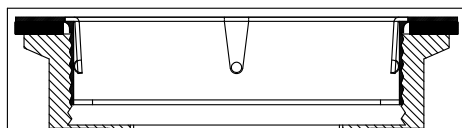
- * DUAL TEFLON SEALS
- * STAINLESS STEEL BALL
- * CAST RED BRASS BODY
- * EXTRA STURDY STAINLESS STEEL CLAMPING RING
- * "CLEAR THROUGH" OPENING - NO NEED TO DISASSEMBLE IF SNAKING IS REQUIRED
- * INDUSTRY STANDARD "SEALING" ANGLE - FITS FLUSH TO STANDARD STAINLESS STEEL SINKS
- * STAINLESS STEEL FLAT STRAINER
- * VANDAL RESISTANT KNOB
- * 1/4 TURN FULLY OPENS AND CLOSSES VALVE

DRAIN RATE:

- * 12 GPM

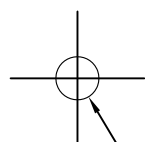
SHIPPING WEIGHT

- * 10.0 LBS

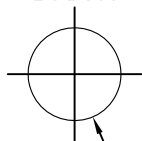


ROUGH-IN:

OVERFLOW


 $\varnothing 1 \frac{5}{8}$ "
[Ø41.3mm]

DRAIN


 $\varnothing 3 \frac{1}{2}$ "
[Ø88.9mm]


FISHER

FISHER MANUFACTURING COMPANY
TOLL FREE: 800-421-6162 - FAX: 800-832-8238
information@fisher-mfg.com - www.fisher-mfg.com