

FISHER[®]

FISHER MANUFACTURING COMPANY TOLL FREE: 800-421-6162 - FAX: 800-832-8238
customer@fisherfaucets.com - www.fisherfaucets.com

PRODUCT NAME:

CONTROL VALVE 8DLH R/S CD

Customer/Wholesaler:

Date:

Job Name:

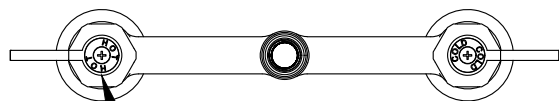
Model Specified: 33000

Quantity:

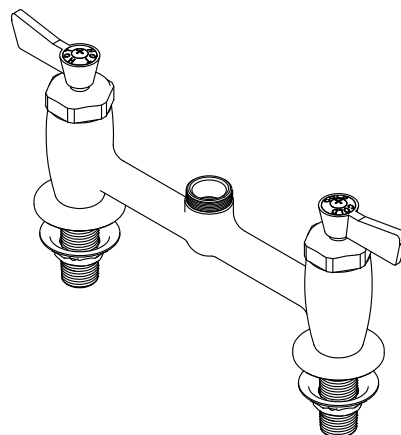
Contractor:

Architect/Engineer:

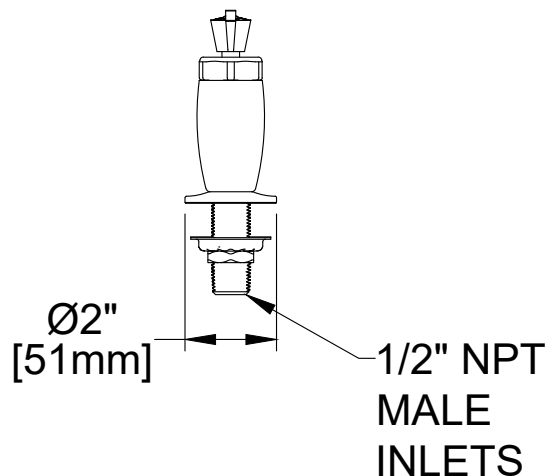
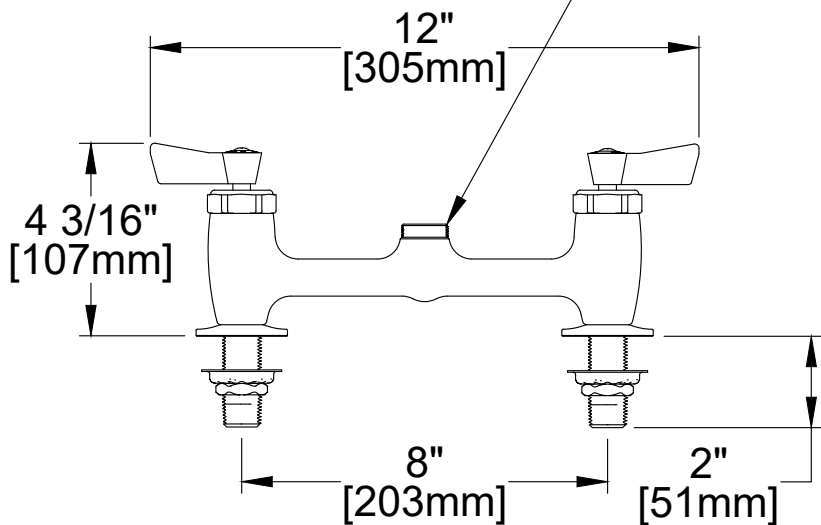
SPEC. CV/CB-SO-8DLL



QUARTER TURN CERAMIC
DISC CARTRIDGES WITH
CHECK STEMS AND COLOR
CODED INDEXES



SWIVEL / RIGID
OUTLET



PRODUCT SPECIFICATIONS:

8" DECK MOUNT MIXING FAUCET, QUARTER TURN CERAMIC DISC CARTRIDGES W/ CHECK STEMS, LEVER HANDLES, SWIVEL / RIGID OUTLET, 1/2" NPT MALE INLETS

PRODUCT COMPLIANCE:

ASME A112.18.1 / CSA B125.1
NSF 61 - Section 9
NSF 372 (Low Lead Content)

Drawn: LC

Checked: EM

Approved: LC

Date: 03/19/24

Sheet: 1 of 2

FISHER[®]

FISHER MANUFACTURING COMPANY TOLL FREE: 800-421-6162 - FAX: 800-832-8238
customer@fisherfaucets.com - www.fisherfaucets.com

PRODUCT NAME:

CONTROL VALVE 8DLH R/S CD

Customer/Wholesaler:

Date:

Job Name:

Model Specified: 33000

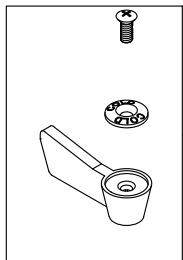
Quantity:

Contractor:

Architect/Engineer:

SPEC. CV/CB-SO-8DLL

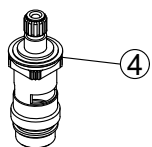
REPLACEMENT PARTS



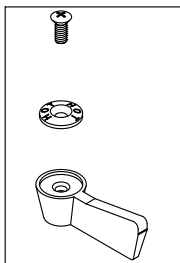
①



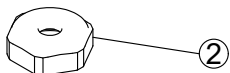
②



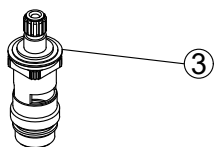
④



①

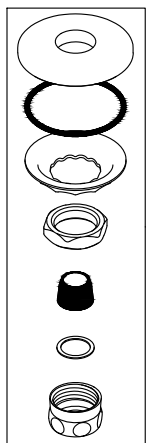
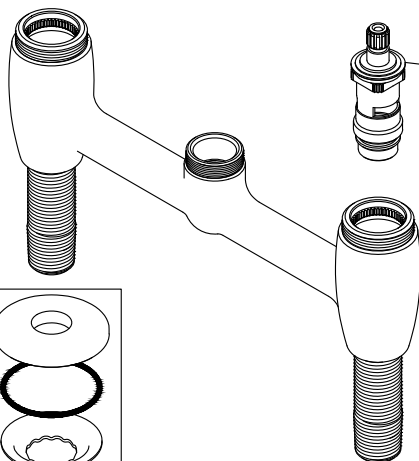


②

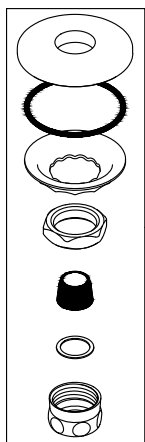


③

NO	QTY	ITEM	NAME
1	2	2000-0002	HANDLE KIT LEVER
2	2	75957	BIBB CAP FAUCET CD NL BRS CR
3	1	75958	STEM 1/2 CERAMIC DISK LH
4	1	75959	STEM 1/2 CERAMIC DISK RH
5	2	75961	KIT 8 INCH DECK INSTALL CD



⑤



⑤

PRODUCT SPECIFICATIONS:

8" DECK MOUNT MIXING FAUCET, QUARTER TURN CERAMIC DISC CARTRIDGES W/ CHECK
STEMS, LEVER HANDLES, SWIVEL / RIGID OUTLET, 1/2" NPT MALE INLETS

PRODUCT COMPLIANCE:

ASME A112.18.1 / CSA B125.1
NSF 61 - Section 9
NSF 372 (Low Lead Content)

Drawn: LC

Checked: EM

Approved: LC

Date: 03/19/24

Sheet: 2 of 2