



Model #3250
Wall Mounted
8" Faucet with 6" swing spout.



Model #22209
Drinking™ Waste Valve



Model #2110-WB
Pre-Rinse Unit: single
deck control valve, ultra
spray, with wall bracket



Model #2210-WB
Pre-Rinse Unit: 8" adj.
wall control valve, ultra
spray, with wall bracket

FISHER MANUFACTURING COMPANY

P.O. BOX 60 Tulare, CA 93275-0060

Telephone: 800/421-6162

Facsimile: 800/832-8238

Information: Information@fisher-mfg.com

www.fisher-mfg.com

**Thank You...
For Your Confidence
In Fisher!**

You have selected a top quality product, industry recognized for it's high degree of quality workmanship and materials as well as outstanding design.

All Fisher products are designed for energy-efficiency, ease of operation, and exceptional durability under rigorous commercial standards. Tested and proven for long lasting, trouble-free service, Fisher products have become "The Standard" for commercial kitchen plumbing installations nationwide.

**TO PURCHASERS OF
OUR BRASS FAUCETS:**

By public initiative, the State of California has adopted legislation (Proposition 65) which requires manufacturer's of many types of products, including faucets, to warn consumers if their products contain chemicals listed by the state as either carcinogens or reproductive toxins. Many of these listed chemicals occur naturally in the air, water, or in foods. To date, more than 200 such chemicals have been placed on this list. Proposition 65 requires that we provide you with the following notice:

WARNING:

" This product Contains A Chemical Known To The State Of California To Cause Birth Defects Or Other Reproductive Harm."



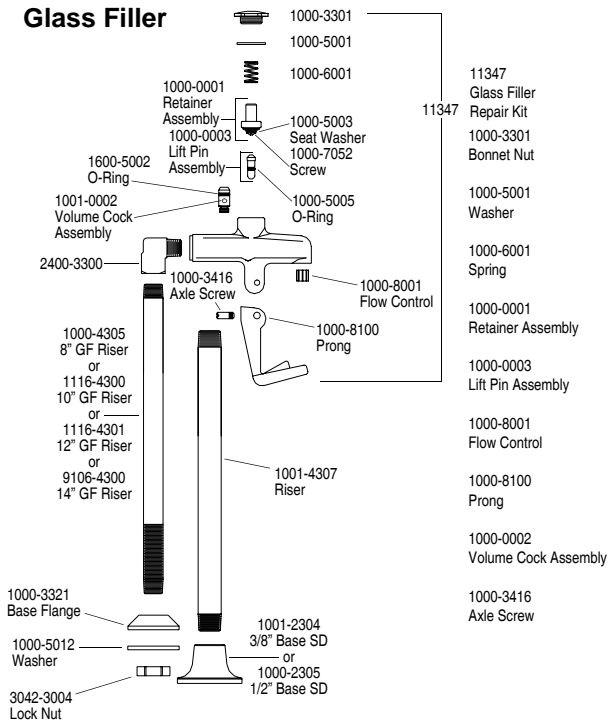
**Quality plumbing products
that meet today's energy
and water conservation
requirements**

**This Product Is For
Commercial Use Only.**

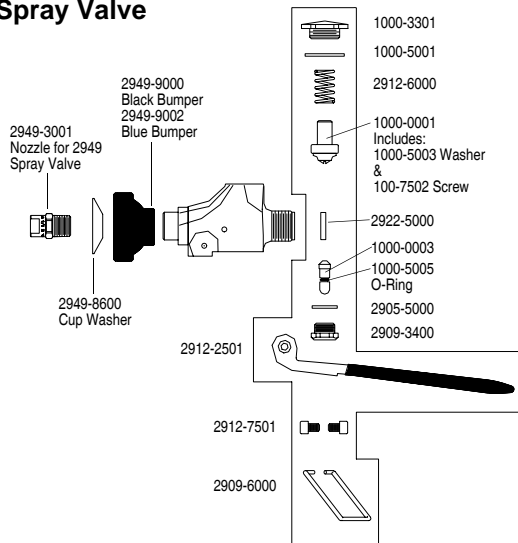
**Not Intended For
Residential Use.**

Quality Replacement Parts

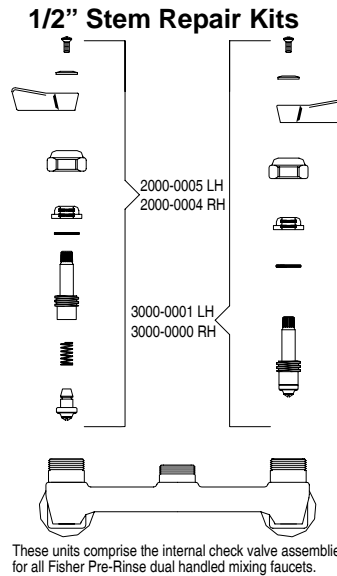
Glass Filler



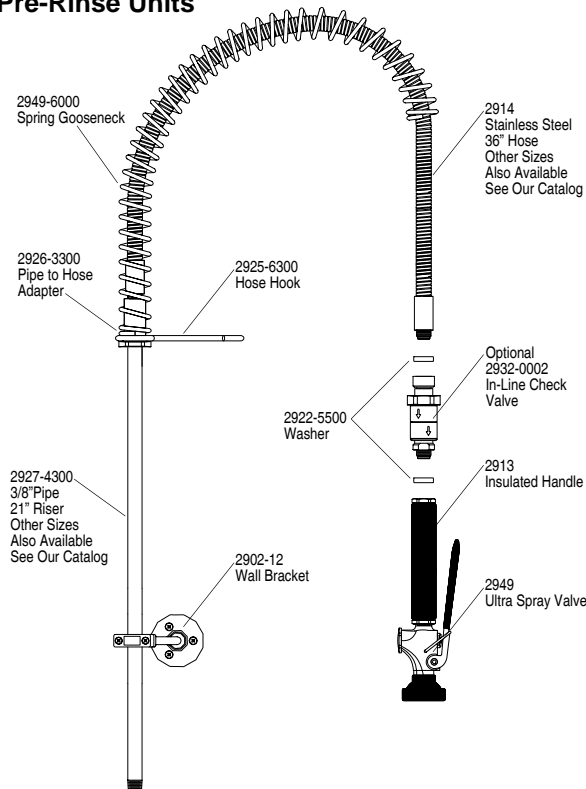
Spray Valve



1/2" Stem Repair Kits



Pre-Rinse Units



Hoses

Energy Efficient Hoses allow only 2.6GPM @ 80 PSI

- #2914 36" Standard Fisher Replacement Hose
- #2915 60" Standard Fisher Replacement Hose
- #2916-15 1/2 15 1/2" Standard Fisher Replacement Hose

"Why Fisher?"

Pre-Rinse Hoses

- Three Ply "aircraft" hydraulic hose
- Last three times longer
- Fits ALL brands of Pre-Rinse Units

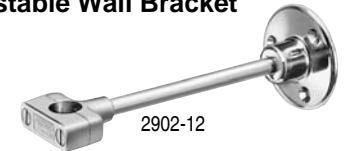
- 2918 44" Replacement Hose. Fits T&S, CHG & Dormont Brands. (Includes Handles, Hose & Adapter)
- 2918-C 44" Replacement Hose for Chicago Pre-Rinse Units & Adapter

Add-On Faucet

Fits all Pre-Rinse Units
Standard 6" Spout



Adjustable Wall Bracket



Ultra Spray Valve



"Why Fisher?"

Ultra Spray Valve

- Lowest Energy User - 1.15 GPM @ 60 PSI
- Cleans Faster - Test Proven
- Engineered To Last - No 'O' Rings To Leak
- Interchangeable - Fits All Brands